

H A N D M A D E

my comfort zone



★★★★★
NAXOS[®]
C E R A M I C H E
FINCIBEC GROUP

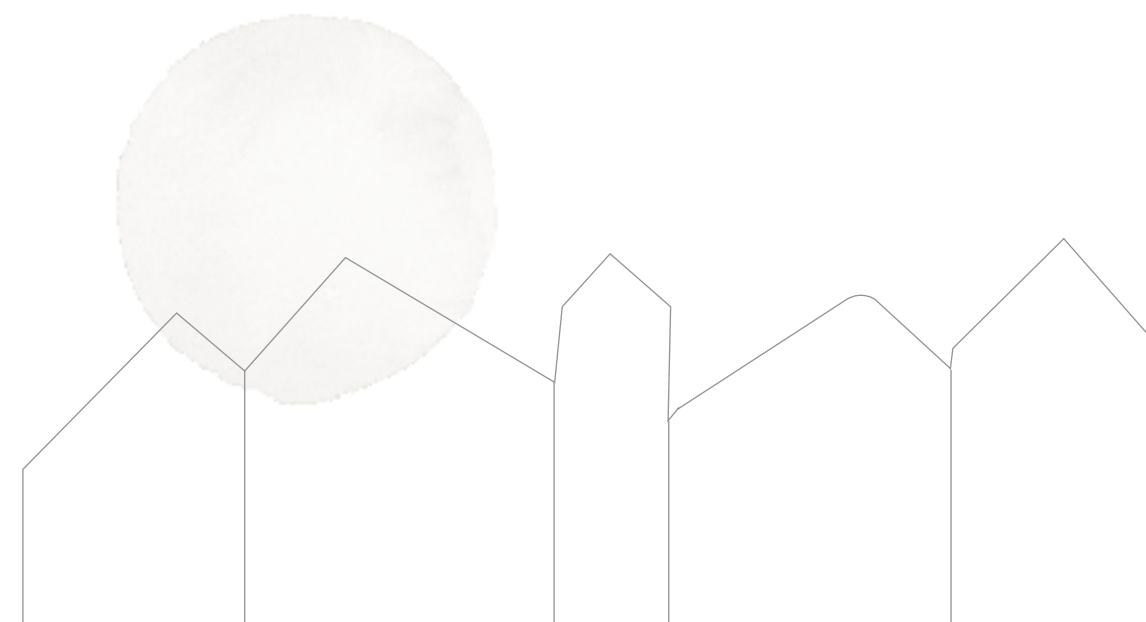
★★★★★
NAXOS[®]
CERAMICHE
FINCIBEC GROUP

RIVESTIMENTI IN PASTA BIANCA / WHITE BODY WALL TILES
PAVIMENTI IN GRES FINE PORCELLANATO / FINE PORCELAIN STONEWARE FLOORS

32,5x32,5_12,7"x12,7"

H A N D M A D E

my comfort zone



SEWARD YOSEMITE NAMIB TUNDRA YUKON

H A N D M A D E

MY COMFORT ZONE



ACCOGLIENTE, CALDA, INTIMA, UNA COLLEZIONE CHE TRASFORMA OGNI AMBIENTE IN "NIDO". HANDMADE È UNA SUPERFICIE D'ARREDO, CHE RICHIAMA IL FASCINO DELLE CERAMICHE ARTIGIANALI, E REGALA UNA PIACEVOLE SENSAZIONE DI "CASA".

LA RICERCA STILISTICA È CURATA E APPROFONDATA, SENZA ECCESSI, CON SOLUZIONI CHE RICHIAMANO I MOOD PIÙ ATTUALI SIA NELLA PALETTE CROMATICA CHE NEI DETTAGLI DECOR.

WARM, WELCOMING AND INTIMATE, A COLLECTION THAT MAKES ANY ENVIRONMENT COSY. HANDMADE IS A DECORATIVE SURFACE THAT INVOKES THE FULL CHARM OF CRAFT CERAMICS AND GIVES A PLEASANT SENSATION OF HOME. THOROUGH AND CAREFUL STYLISTIC RESEARCH HAS PRODUCED SUBTLE SOLUTIONS THAT ECHO THE MODERN MOODS IN COLOURS AND DECORATIVE ELEMENTS.



SEWARD



YOSEMITE



NAMIB



TUNDRA



YUKON

★★★★★
NAXOS
CERAMICHE
FINCIBEC GROUP

H A N D M A D E

32,5x32,5_12,7"x12,7"

TINTE DELICATE E UNIFORMI, SUPERFICI CHE SI ISPIRANO AL CEMENTO GREZZO, LEGGERMENTE STUTTURATE, IN TONI PASTELLO NEUTRI E MORBIDI.

NELLA VERSIONE SINERGY, ELEGANTI MOTIVI GRAFICI A CONTRASTO, DAL SAPORE RETRÒ, PERMETTONO DI CREARE GRADEVOLI EFFETTI COMPOSITIVI.

NELLA VERSIONE HOLE, INVECE, IL MOVIMENTO DI SUPERFICIE È DATO DA PICCOLI PUNTINI PIÙ O MENO REGOLARI, COME UNA RETINATURA LEGGERISSIMA, DAL SAPORE ARTIGIANALE E VISSUTO.

COMPLETANO LA GAMMA MOSAICI E MATTONCINI SU RETE, CHE ARRICCHISCONO I GIOCHI GRAFICI E FORMALI, FILO CONDUTTORE DELLA COLLEZIONE.

IL FORMATO DEI RIVESTIMENTI È 32,5X32,5, MENTRE I PAVIMENTI ABBINATI SONO PROPOSTI IN 60X60 CM.

DELICATE AND UNIFORM TONALITIES, SURFACES INSPIRED BY RAW CONCRETE AND SLIGHTLY STRUCTURED, IN PASTEL SOFT AND NEUTRAL TONES.

THE SINERGY VERSION, WITH ELEGANT AND VINTAGE CONTRASTING GRAPHIC MOTIFS, ALLOWS CREATION OF ATTRACTIVE COMPOSITIONAL EFFECTS.

THE HOLE VERSION HAS A SURFACE MOVEMENT OF A LIGHT NETTING OF SMALL, MORE OR LESS REGULAR HOLES THAT GIVE IT A WARM CRAFT FEEL.

THE RANGE IS COMPLETE WITH MOSAIC AND BRICKWORK PATTERNING, WHICH ENRICH THE GRAPHICAL AND FORMAL THEME OF THE COLLECTION.

THE TILING FORMAT IS 32.5X32.5 WHILE THE MATCHING FLOORING FORMAT IS 60X60CM.



SEWARD YOSEMITE



AMBIENTE REALIZZATO CON / SETTING REALIZED WITH:

HOLE SEWARD 32,5X32,5 - PAV OYSTER 60X60





AMBIENTE REALIZZATO CON / SETTING REALIZED WITH:

SEWARD 32,5X32,5 + HOLE SEWARD 32,5X32,5 + HOLE YOSEMITE 32,5X32,5 + MODULO HOLE YOSEMITE 32,5X32,5
PAV OYSTER 60X60



AMBIENTE REALIZZATO CON / SETTING REALIZED WITH:
HOLE SEWARD 32,5X32,5 + MODULO HOLE YOSEMITE 32,5X32,5
PAV OYSTER 60X60

NAMIB TUNDRA



H A N D M A D E

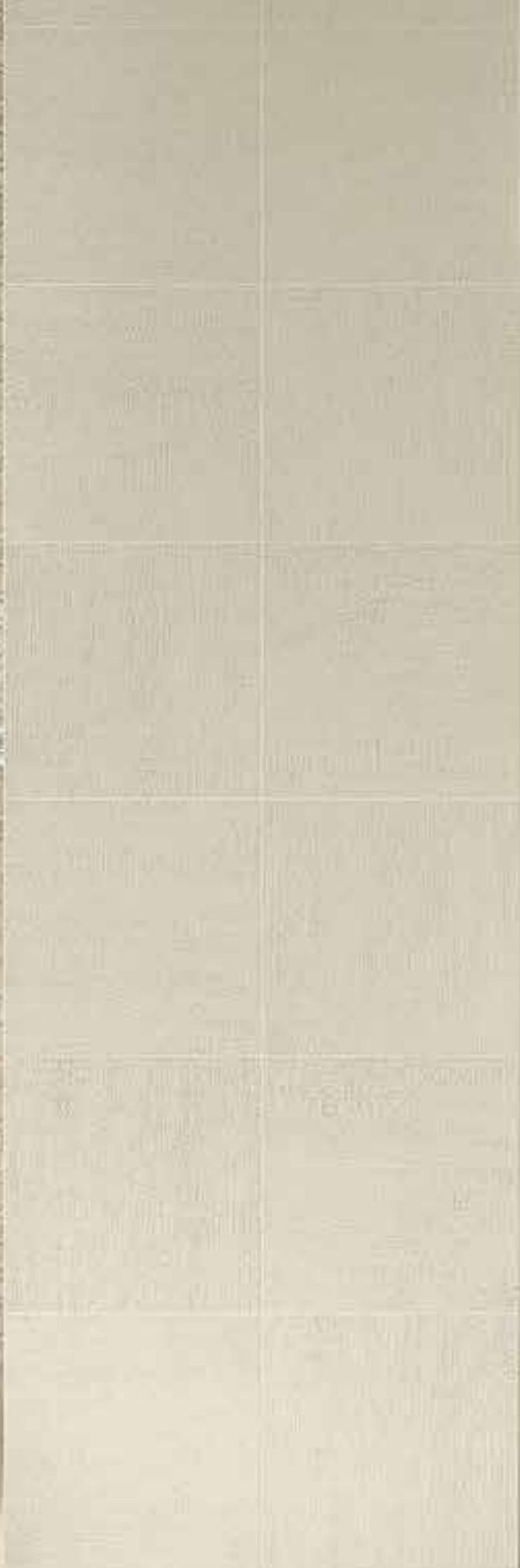
my comfort zone

★★★★★
NAXOS
CERAMICHE
FINCIBEC GROUP

AMBIENTE REALIZZATO CON / SETTING REALIZED WITH:

NAMIB 32,5X32,5 + SINERGY MIX TUNDRA 32,5X32,5





AMBIENTE REALIZZATO CON / SETTING REALIZED WITH:

NAMIB 32,5X32,5 + TUNDRA 32,5X32,5 + SINERGY MIX TUNDRA 32,5X32,5 + NEST TUNDRA 32,5X32,5
PAV MARL 60X60



AMBIENTE REALIZZATO CON / SETTING REALIZED WITH:

NEST TUNDRA 32,5X32,5



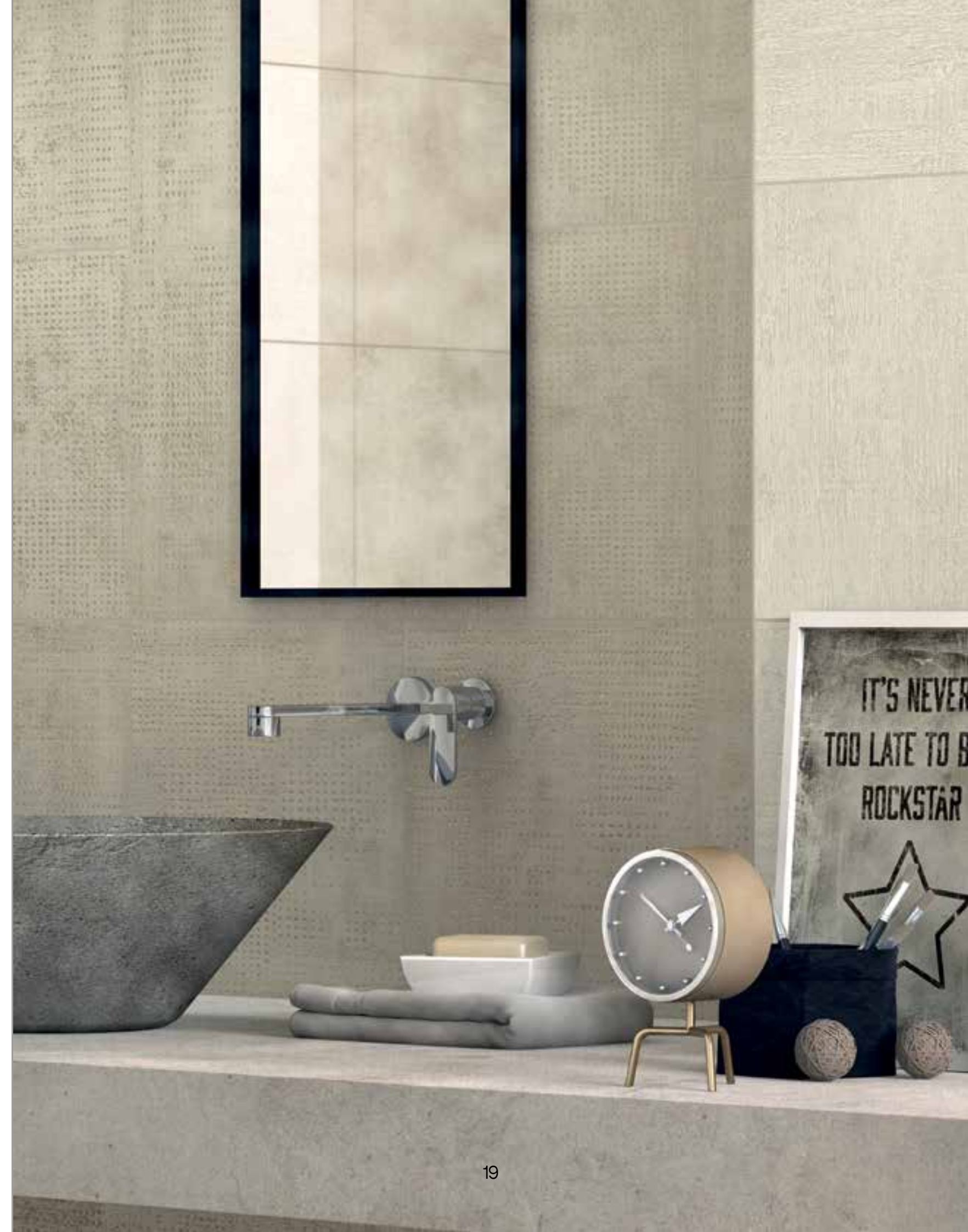
NAMIB TUNDRA



★★★★★
NAXOS
CERAMICHE
FINCIBEC GROUP

AMBIENTE REALIZZATO CON / SETTING REALIZED WITH:

NAMIB 32,5X32,5 + HOLE TUNDRA 32,5X32,5





AMBIENTE REALIZZATO CON / SETTING REALIZED WITH:

NAMIB 32,5X32,5 + TUNDRA 32,5X32,5 + HOLE NAMIB 32,5X32,5 + HOLE TUNDRA 32,5X32,5
PAV MARL 60X60





AMBIENTE REALIZZATO CON / SETTING REALIZED WITH:
NAMIB 32,5X32,5 + HOLE NAMIB 32,5X32,5 + HOLE TUNDRA 32,5X32,5



NAMIB YUKON



★★★★★
NAXOS
CERAMICHE
FINCIBEC GROUP

AMBIENTE REALIZZATO CON / SETTING REALIZED WITH:

YUKON 32,5X32,5 + PIQUÉ MIX YUKON 32,5X32,5
PAV MARL 60X60





AMBIENTE REALIZZATO CON / SETTING REALIZED WITH:

NAMIB 32,5X32,5 + YUKON 32,5X32,5 + HOLE YUKON 32,5X32,5 + PIQUÉ MIX YUKON 32,5X32,5
PAV MARL 60X60

SEWARD YOSEMITE



AMBIENTE REALIZZATO CON / SETTING REALIZED WITH:

SEWARD 32,5X32,5 + YOSEMITE 32,5X32,5 + SINERGY MIX YOSEMITE 32,5X32,5
PAV OYSTER 60X60





AMBIENTE REALIZZATO CON / SETTING REALIZED WITH:

SEWARD 32,5X32,5 + YOSEMITE 32,5X32,5 + SINERGY MIX YOSEMITE 32,5X32,5
PAV OYSTER 60X60



AMBIENTE REALIZZATO CON / SETTING REALIZED WITH:
YOSEMITE 32,5X32,5



S E W A R D



★★★★★
NAXOS
CERAMICHE
FINCIBEC GROUP

AMBIENTE REALIZZATO CON / SETTING REALIZED WITH:

HOLE SEWARD 32,5X32,5



H A N D M A D E

RIVESTIMENTI IN PASTA BIANCA RETTIFICATI
WHITE BODY WALL TILES RECTIFIED



32,5x32,5
93923 Seward / ■ 117



32,5x32,5
93925 Yosemite / ■ 117



32,5x32,5
93927 Namib / ■ 117



32,5x32,5
94065 Tundra / ■ 117



32,5x32,5
94066 Yukon / ■ 117



32,5x32,5
94819 Hole Seward / ■ 124



32,5x32,5
93940 Hole Yosemite / ■ 124



32,5x32,5
93945 Hole Namib / ■ 124



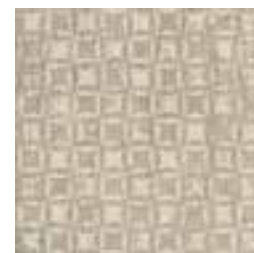
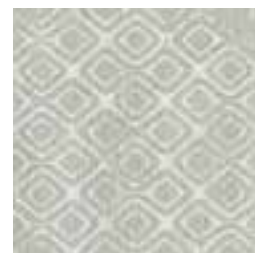
32,5x32,5
93944 Hole Tundra / ■ 124



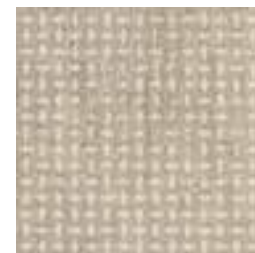
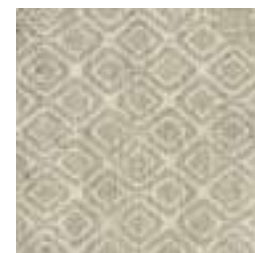
32,5x32,5
93946 Hole Yukon / ■ 124



32,5x32,5
93938 Sinergy Mix Yosemite* / ■ 135



32,5x32,5
93939 Sinergy Mix Tundra* / ■ 135



32,5x32,5
94822 Modulo Hole Seward
● 38



32,5x32,5
94430 Modulo Hole Yosemite
● 38



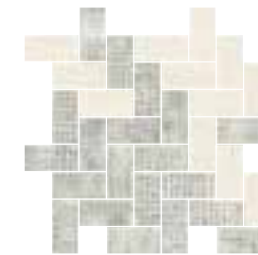
32,5x32,5
94431 Modulo Hole Namib
● 38



32,5x32,5
94432 Modulo Hole Tundra
● 38



32,5x32,5
94433 Modulo Hole Yukon
● 38



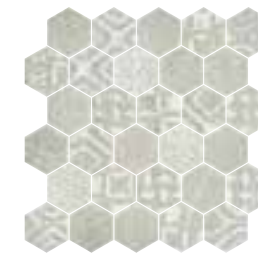
32,5x32,5
94422 Piqué Mix Yosemite
32 tessere / ● 54



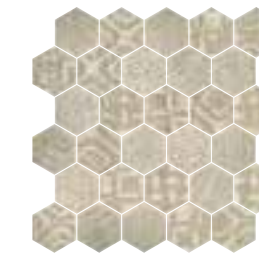
32,5x32,5
94423 Piqué Mix Tundra
32 tessere / ● 54



32,5x32,5
94424 Piqué Mix Yukon
32 tessere / ● 54



32,5x32,5
94998 Nest Yosemite
30 tessere / ● 78



32,5x32,5
94997 Nest Tundra
30 tessere / ● 78

PAVIMENTI IN GRES FINE PORCELLANATO RETTIFICATI FINE PORCELAIN STONEWARE RECTIFIED FLOORTILES



60x60
94371 Pav. Oyster / ■ 105



60x60
94372 Pav. Marl / ■ 105



★★★★★
NAXOS
CERAMICHE
FINCIBEC GROUP

* Versione decoro con più soggetti confezionati random / Decor Version with multiple subjects, packaged randomly

H A N D M A D E

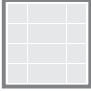


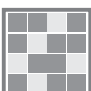
Categorie d'impiego per pavimenti in gres fine porcellanato

Use classes for fine porcelain stoneware floors

C1	Piastrelle da pavimento consigliate per traffico leggero Floor tiles recommended for light traffic
C2	Piastrelle da pavimento consigliate per traffico medio-leggero Floor tiles recommended for medium-light traffic
C3	Piastrelle da pavimento consigliate per traffico medio Floor tiles recommended for medium traffic
C4	Piastrelle da pavimento consigliate per traffico medio-pesante Floor tiles recommended for medium-heavy traffic
C5	Piastrelle da pavimento consigliate per impieghi con forti sollecitazioni Floor tiles recommended for highly stresses uses

Variazioni cromatiche


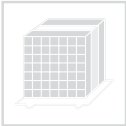
Colour variations

	V1 Aspecto uniforme Even appearance
	V2 Lieve variazione Light variation
	V3 Media variazione Medium variation
	V4 Intensa variazione Strong variation

È indispensabile all'atto della posa, prelevare le piastrelle da più confezioni. It is necessary to take the tiles from several different boxes when laying them.



PESI E IMBALLI RIVESTIMENTO / WALL TILE

Weights and packaging

	32,5x32,5	piqué + modulo 32,5x32,5	nest 32,5x32,5
	Pc. 10	5	5
	m² 1,06	0,528	0,47
	Kg 20,9	10,45	7,5
	Colli/Boxes 44	-	-
	m² 46,64	-	-
	Kg 916,6	-	-

PESI E IMBALLI PAVIMENTO / FLOOR TILE

Weights and packaging

	60x60
	Pc. 3
	m² 1,08
	Kg 22,5
	Colli/Boxes 40
	m² 43,2
	Kg 900

NOTE / NOTES


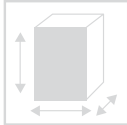



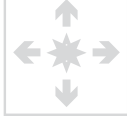



I prodotti possono essere modificati da Fincibec senza preavviso, respingendo ogni responsabilità su possibili danni diretti o indiretti causati da potenziali modifiche.
Fincibec reserves the right to modify its products without prior notice and cannot be held liable for direct or indirect damage caused by such modifications.

Verificare sempre la correttezza delle informazioni e dei dati relativi a codici, imballaggi e pesi, consultando il listino prezzi in vigore.
Always refer to the price list in force to ensure correct information and data on codes, packaging, and weight.

Le tonalità dei colori riportate nel catalogo sono indicative
The colours shades, reported on the catalogue, are indicative.

CARATTERISTICHE TECNICHE / TECHNICAL DATA

Rivestimenti in pasta bianca // White body wall tiles



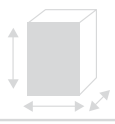









 ISO 13006BIII EN 14411/L	Caratteristiche tecniche Technical data Caractéristiques techniques Technische Daten Características técnicas	Tipo di prova Standard of test Norme du test Testnorm Tipo de prueba	Valore Naxos Naxos standards Valeur Naxos Ergebnis Naxos Valor de Naxos
	Dimensioni Sizes Dimensions Abmessungen Dimensiones	ISO 10545.2	A norma According to norm Selon la norme Nach Norm Conforme
	Assorbimento d'acqua Water absorption Absorption d'eau Wasseraufnahme Absorción del agua	ISO 10545.3	> 10%
	Sforzo di rottura Modulus of rupture Effort de rupture Bruchlast Esfuerzo de rotura	ISO 10545.4	R ≥ 600 N
	Resistenza a flessione Breaking strength Resistance a la flexion Biegefestigkeit Resistencia a la flexión	ISO 10545.4	R ≥ 12 N/mm²
	Coefficiente di dilatazione termica lineare Thermal expansion coefficient Coefficient de dilatation thermique lineare Wärmeausdehnungskoeffizient Coeficiente de dilatación termica linear	ISO 10545.8	A norma According to norm Selon la norme Nach Norm Conforme
	Resistenza al cavillo Crazing resistance Resistance à la craquelure Widerstand gegen haarriss Resistencia al cuarteado	ISO 10545.11	Garantita Guaranteed Garantie Garantiert Garantizada
	Resistenza all'attacco chimico Chemical resistance Resistance chimique Beständigkeit gegen Chemikalien Resistencia al ataque químico	ISO 10545.13	A norma According to norm Selon la norme Nach Norm Conforme
	Resistenza alle macchie Stains resistance Resistance aux taches Fleckenbeständigkeit Resistencia a las manchas	ISO 10545.14	A norma According to norm Selon la norme Nach Norm Conforme

Escluso pezzi speciali ed elementi decorativi
With the exception of special pieces and decors

Per ulteriori informazioni consultare le schede tecniche dal sito www.naxos-ceramica.it
For any further inquiries, refer to the data sheets on the web-site www.naxos-ceramica.it

CARATTERISTICHE TECNICHE / TECHNICAL DATA

Pavimenti in gres fine porcellanato / Fine porcelain stoneware floor tiles

 ***** NAXOS <small>FINCIBEC GROUP</small> ISO 13006B1a EN 14411/G	Caratteristiche tecniche Technical data Caractéristiques techniques Technische Daten Características técnicas	Tipo di prova Standard of test Norme du test Testnorm Tipo de prueba 	Valore Naxos Naxos standards Valeur Naxos Ergebnis Naxos Valor de Naxos
	Dimensioni Sizes Dimensions Abmessungen Dimensiones	ISO 10545.2	A norma According to norm Selon la norme Nach Norm Conforme
	Assorbimento d'acqua Water absorption Absorption d'eau Wasseraufnahme Absorción del agua	ISO 10545.3	$\leq 0,2\%$
	Resistenza a flessione Breaking strength Resistance a la flexion Biegefestigkeit Resistencia a la flexión	ISO 10545.4	S \geq 1300 N
	Resistenza a flessione Breaking strength Resistance a la flexion Biegefestigkeit Resistencia a la flexión	ISO 10545.4	R \geq 35 N/mm²
	Resistenza agli shock termici Resistance to thermal shock Resistance aux chocs thermique Temperaturwechselbeständigkeit Resistencia a los cambios térmicos	ISO 10545.9	Garantita Guaranteed Garantie Garantiert Garantizada
	Resistenza al gelo Frost resistance Resistance au gel Frostbeständigkeit Resistencia a la helada	ISO 10545.12	Garantita Guaranteed Garantie Garantiert Garantizada
	Coefficiente di dilatazione termica lineare Thermal expansion coefficient Coefficient de dilatation thermique lineare Wärmeausdehnungskoeffizient Coeficiente de dilatación termica lineal	ISO 10545.8	A norma According to norm Selon la norme Nach Norm Conforme
	Resistenza all'attacco chimico Chemical resistance Resistance chimique Beständigkeit gegen Chemicalien Resistencia al ataque químico	ISO 10545.13	A norma According to norm Selon la norme Nach Norm Conforme
	Resistenza alle macchie Stains resistance Resistance aux taches Fleckenbeständigkeit Resistencia a las manchas	ISO 10545.14	A norma According to norm Selon la norme Nach Norm Conforme
	Resistenza allo scivolamento Slip Resistance Resistance au glissement Rutschfestigkeit Resistencia del resbalon	DIN 51130	R9

H A N D M A D E

www.naxos-ceramica.it

NAXOS[®]
 C E R A M I C H E
 FINCIBEC GROUP

Escluso pezzi speciali ed elementi decorativi
 With the exception of special pieces and decors

Per ulteriori informazioni consultare le schede tecniche dal sito www.naxos-ceramica.it
 For any further inquiries, refer to the data sheets on the web-site www.naxos-ceramica.it

★ ★ ★ ★ ★
NAXOS[®]
C E R A M I C H E

FINCIBEC GROUP



FINCIBEC S.P.A

Uffici Comm.li, Stabilimento:
Strada Statale 569, 169
41014 Solignano (MO) Italy

Magazzino: Strada Statale 569, 187
41014 Solignano (MO) Italy
Tel. +39 059.748811
Fax +39 059.797376
www.naxos-ceramica.it
info@naxos-ceramica.it

Amministrazione:
Via Valle D'Aosta, 47
41049 Sassuolo (MO) Italy
Tel. +39 0536.861300
Fax +39 0536.861351
www.fincibec.it
info@fincibec.it

GRUPPO FIRE - Fire S.r.l



CERTIFICATO N. EDIL. 2009_012

